

# National Olympic Sports Center

## Case Study

Previous System:  
400 Watt Metal Halide Light Fixtures

Mledtech System:  
160 Watt LED 2M High Bay Light Fixtures



### Customer Profile

Beijing Vango International Fencing Sports Center is an Olympic arena which offers members unlimited sparring time and advice from nine on site coaches, three of which are former members of China's Olympic fencing team.

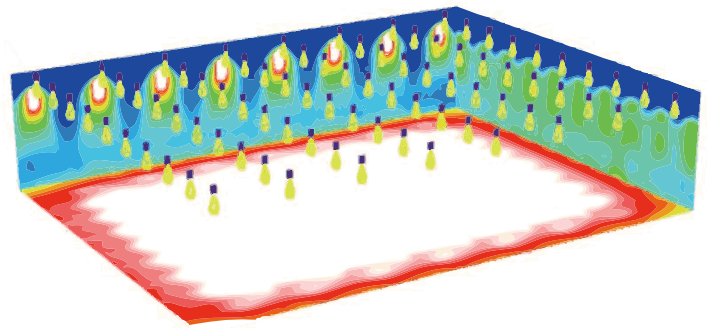
### Scope of Work

Mledtech was contacted to create a lighting design for Beijing Vango International Fencing Sports Center. This project consisted of a one for one replacement of the existing 400 Watt Metal Halide Fixtures.

In all sports, LED lighting provides the best stage for competitors to perform, and it's no different for fencing athletes. Glare control technology equals more uniform lighting with fewer unwanted shadows or hot spots that can distract the athletes performance. In a sport with little margin for error, LED technology helps ensure the lights don't create another variable for fencers.

### The Solution

An engineered photometric design was performed. We checked glare and light output. Then we provided exact aiming points for each fixture. Mledtech Vision Smart 160 Watt LED 2M High Bay light fixtures were installed using our one for one replacement plan. Our LED lighting solutions deliver uniform light in the air and on the court much more efficiently than metal halide light and significantly reduce unwanted light spill and light pollution.



mledtech  
LED Sports Lighting

**Enhance Athletes' Performance**

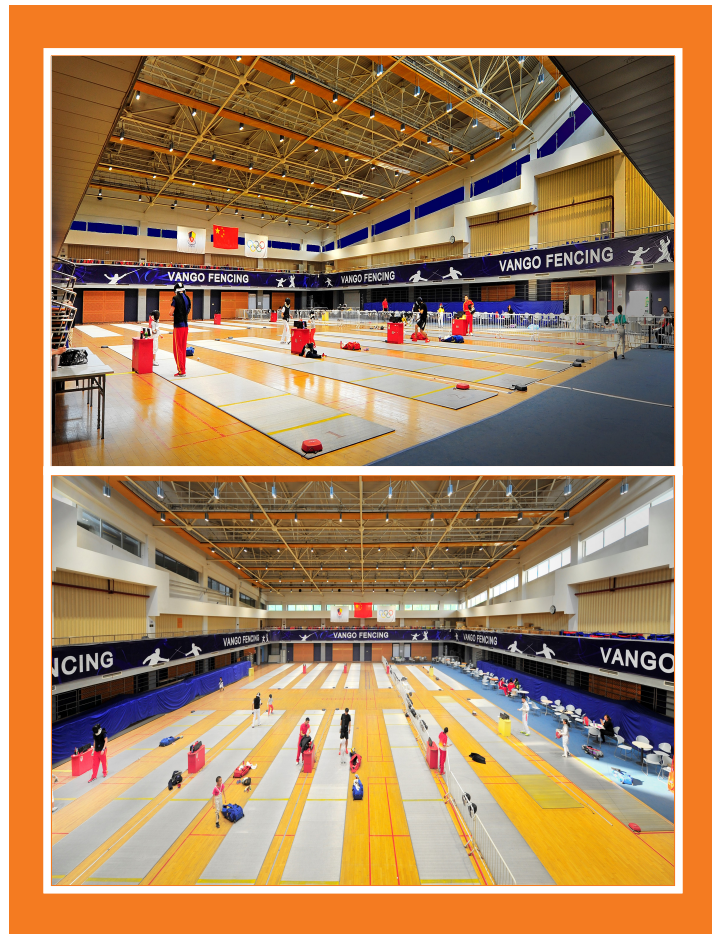
## The Results

After the installation the facility manager said "I have never seen light so clear!"

Where every feint counts, uniform, no-glare light does not effect the vision of the athletes while trying to execute an attack properly. Mledtech luminaire produce a minimum of glare and spillover, and require no maintenance through the extent of the manufacture warranty.

The new lighting system achieved an average of uniformity of 70 percent and a saved them in energy costs by 60 percent. LEDs offer a low-cost entry point to provide high-quality light and make the venue more dynamic. Also, the long life of the LED carries a great saving in replacement parts and an almost total unconcern of the maintenance personnel.

Mledtech Vision Smart 2M High Bay light fixtures improved the National Olympic Centers experience with the greatest visual comfort for the fencing athletes. The advantage is clear. Mledtech products produce the highest quality lighting in the industry backed by a seven year warranty.



Mledtech approaches each project as a unique opportunity to exceed the customers', the players' and the observers' expectations in terms of improved lighting delivered, improved visual comfort and operational savings. Our process steps help streamline this effort. We will meet directly with financial decision makers to go over final proposal in detail. Mledtech will work with the customer's contractor to provide them with detailed computer aiming points which can be set while on the ground.



mledtech

LED Sports Lighting



Paddle Tennis  
Courts



Recreational  
Facilities



Ice Rinks



Football  
Stadiums



Trap and  
Skeet

[www.mledtech.com](http://www.mledtech.com)